

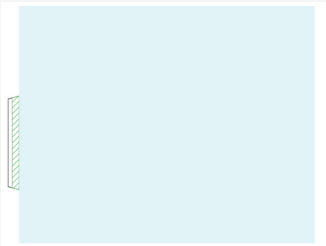
TUTORIAL: MACARON BOX



Project Introduction

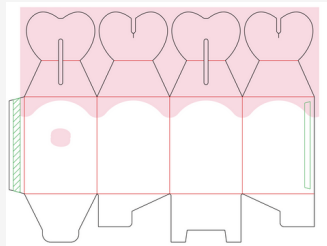
This premium Macaron box combines velvety soft-touch coating with a striking sand texture, offering a unique sensory contrast of smooth and rough. The inner barrier coating ensures safe food contact-perfectly showcased with a delicate macaron. A packaging experience that speaks to both elegance and indulgence.

Project Description



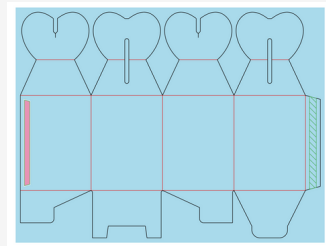
Layer 1:

A full-surface soft-touch coating **Sensora® WB FP Matt Coating 20F 5000** envelops the box in a velvety finish, adding a sense of elegance and warmth to the packaging experience.



Layer 2:

Sand texture **Sensora® WB FP Plus Matt Coating Textured 20F 5050** is selectively applied to the closure flaps and macaron icon, creating a striking tactile contrast that invites touch and enhances visual detail.



Layer 3:

Senolith® WB FP Plus Barrier Coating 60F 3000 on the inner surface ensures safe direct food contact, protecting against moisture and grease-perfect for presenting delicate treats like macarons with confidence and care.

Key data:

Substrate	265 g/qm GC1 Pro FBB Bright
Offset inks	Huber Corona MGA
Offset printing plates	Kodak Trillian
Flexographic printing plates	Seal F
Printing process	Offset Printing and Flexo Printing
Coatings	Stahl Packaging Coatings

Cooperation partner:



Our team is keen to help you out, for further information and individual consultation.

www.stahl.com/packaging-coatings