

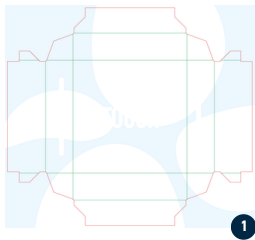
TUTORIAL: LUXURY PRALINES QUARTETT

Project Introduction

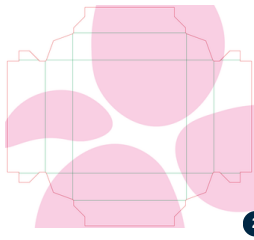
The Luxury Pralines Quartett packaging combines refined aesthetics with functional protection to create a premium unboxing experience. Carefully layered coatings deliver striking visual contrast, soft-touch haptics, and reliable barrier performance, ensuring the pralines are presented elegantly while remaining well protected throughout handling and storage.



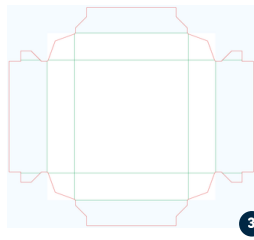
Project Description



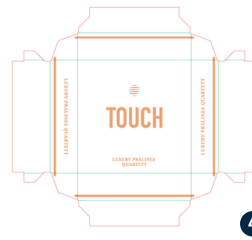
1



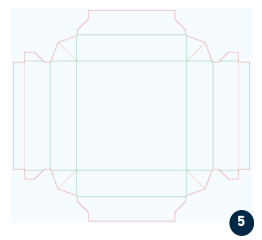
2



3



4



5

Layer 1:

The outer lid is finished with **Senolith® WB FP High Gloss Coating 80F 1000**, creating an elegant, lacquer-like surface. The high-gloss effect intensifies colour depth and graphic brilliance, immediately positioning the packaging as premium.

Layer 2:

A selective application of **Sensora® WB FP Matt Coating 20F 5000**, activated with Hypac™ Activator 99/9855, introduces a soft-touch matt finish. The velvety surface contrasts with the glossy areas and invites interaction, adding a refined tactile dimension.

Layer 3:

With **Repura™ WB FP Plus Barrier Coating 60F 3000**, the lid gains functional protection against moisture and oil & grease. This barrier layer helps preserve the pralines' freshness while maintaining the pack's premium visual appeal.

Layer 4:

Hot-foil stamping is used to accentuate key design elements with metallic highlights. The precise foil application adds visual emphasis and underlines the luxurious character of the packaging.

Layer 5:

The inside of the lid is protected with **Repura™ WB FP Plus Barrier Coating 60F 3000**, supporting food-contact compliance while ensuring a clean, high-quality interior surface.

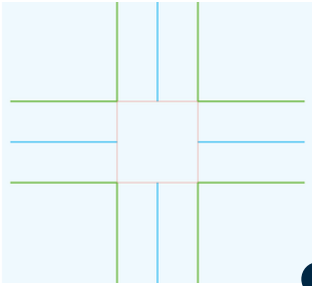
Cooperation partner:



Our team is keen to help you out, for further information and individual consultation.

www.stahl.com/packaging-coatings

Project Description



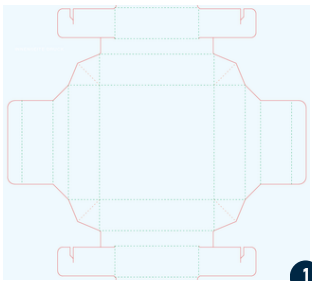
1

Layer 1:

The spacer inlay is coated with **Repura™ WB FP Plus Barrier Coating 60F 3000**, providing hygienic separation and stabilisation of the pralines, while supporting consistent packaging performance.



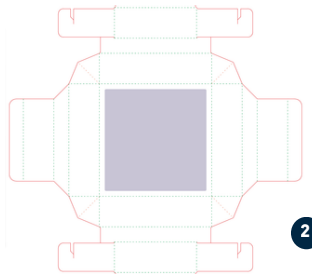
Project Description



1

Layer 1:

Applied to the inner bottom, **Repura™ WB FP Plus Barrier Coating 60F 3000** protects against moisture and grease migration, helping to preserve product quality throughout storage and transport.



2

Layer 2:

The outer bottom is finished with **Senolith® WB FP High Gloss Coating 80F 1000**, delivering a durable, high-gloss appearance that enhances scuff resistance and completes the packaging with a premium finish.

Key data:

Substrate	Metsa Board Prime Bright, 255 g/m2
Machine	Manroland 705 with Coating Unit
Offset inks	Flint Group Novasense Premium CMYK low migration
Printing process	Offset Printing and Flexo Printing
Coatings	Stahl Packaging Coatings



Cooperation partner:



Our team is keen to help you out, for further information and individual consultation.

www.stahl.com/packaging-coatings